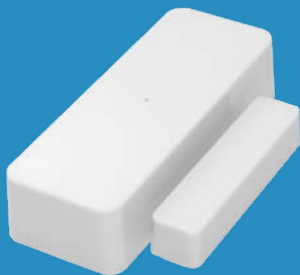
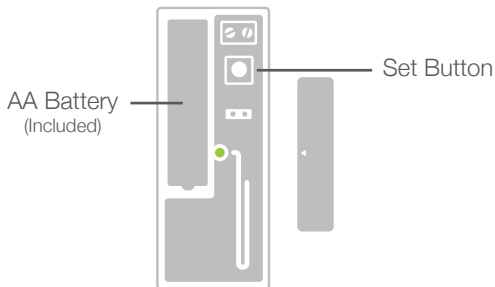
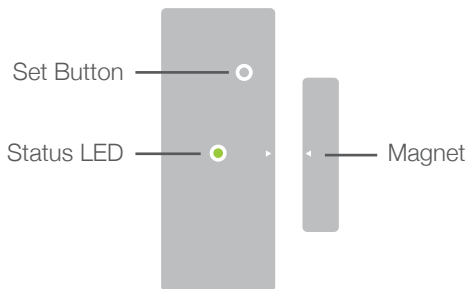


I N S T E O N ®



INSTEON Open/Close Sensor
Quick Start Guide

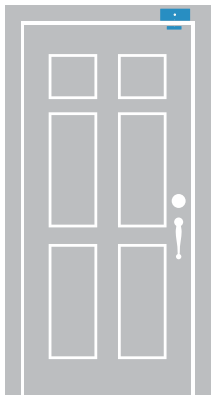
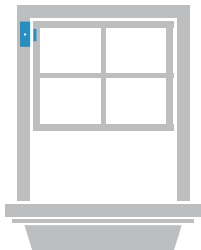
INSTEON Open/Close Sensor



(Cover Removed)

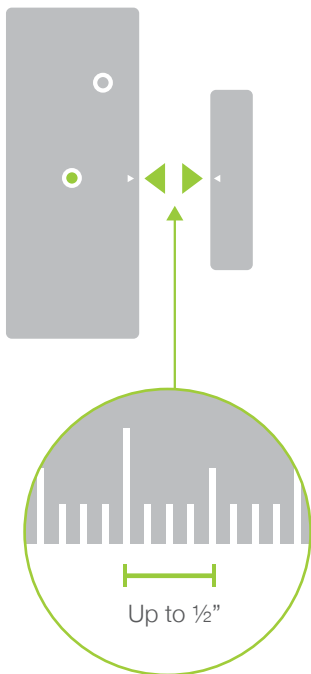
Sensor Placement

- 1 Peel off the tape backing and mount the sensor and magnet to a window or door.



2

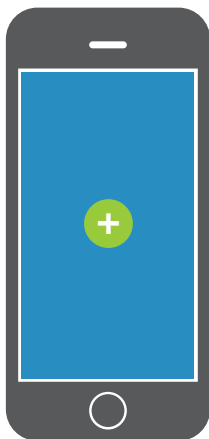
Position the sensor so that the arrows on the magnet and sensor enclosure align and are no more than $\frac{1}{2}$ " apart.



Linking to the Hub

1

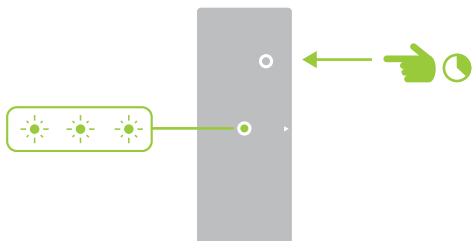
Follow the on-screen instructions to add your Open/Close Sensor to the INSTEON Hub.



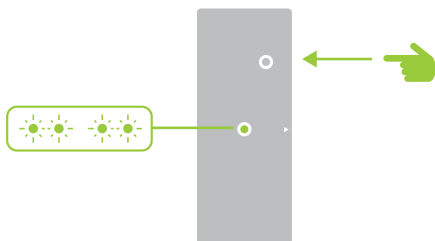
If not using the Hub, refer to the instructions that came with your product.

2

When prompted, press and hold the Open/Close Sensor's set button until the status LED begins blinking.



Tap the set button. The status LED will double-blink.



Configure Alerts

To receive email and text message alerts when motion is detected, switch on alerts from device settings within the INSTEON app.



Learn More

For the complete Owner's Manual, video tutorials, product support and more, visit:
insteon.com/support

