

I N S T E  N

Getting Started with Insteon Thermostat for Heat Pumps

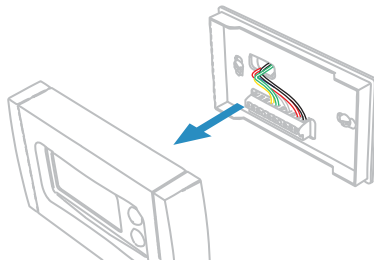


Before installing Insteon Thermostat,
ensure your system is compatible.

insteon.com/compatible

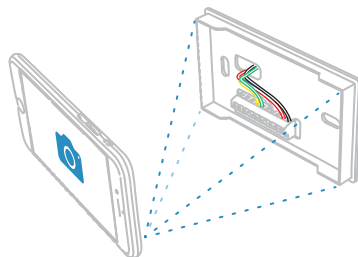
1

Turn off power and remove your
old thermostat's cover.

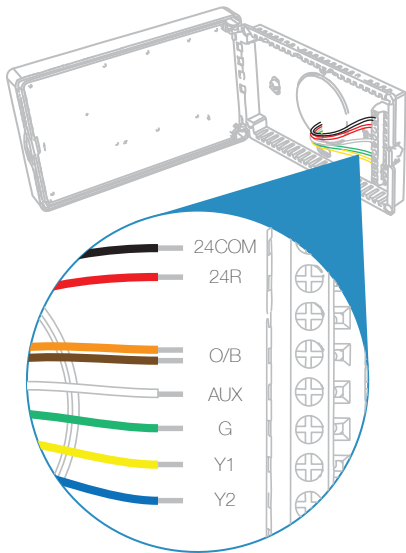


2

Take a picture of your thermostat's wires and
apply the optional wire labels. Carefully remove
the old mounting bracket.



- 3 Install Insteon Thermostat and connect the wires. Close the cover and **turn on power**.

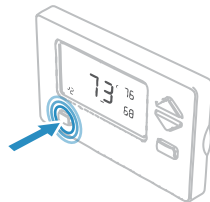


Wire colors may vary. Not all wires may be used. Match your wires to the labels printed on Insteon Thermostat.

- 4 Follow the on-screen instructions in the Insteon app to add Insteon Thermostat.



- 5 When prompted, press and hold the set button until Thermostat double-beeps.



For more documentation, visit:
insteon.com/get-started-2732-242