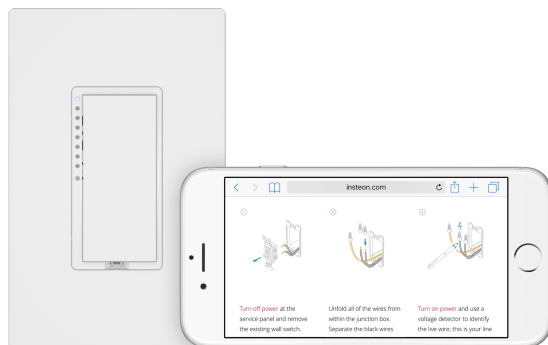


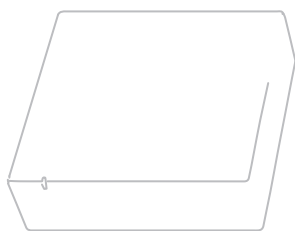
Getting Started with the Insteon Starter Kit



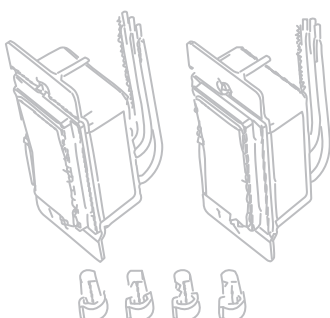
Get Started

insteon.com/get-started-2244-273

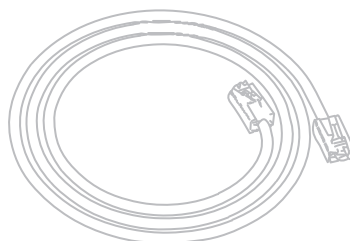
What's included in your Insteon Starter Kit



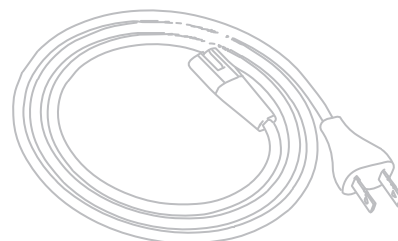
Insteon Hub



Dimmer Switches
and Wire Nuts

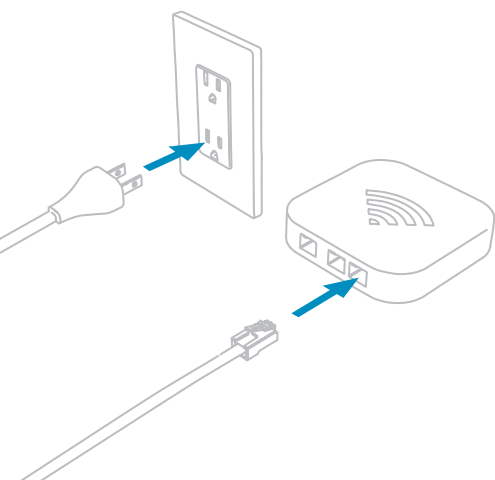


Ethernet Cable

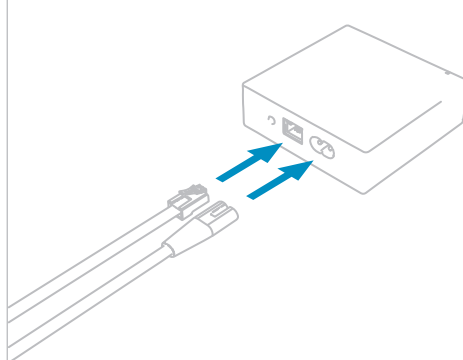


Power Cable

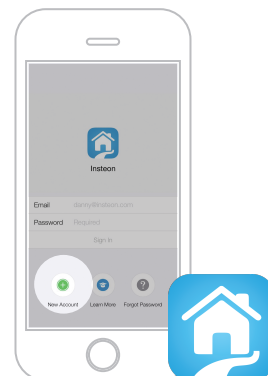
- 1 Connect the ethernet cable to your router and plug in the power cable.



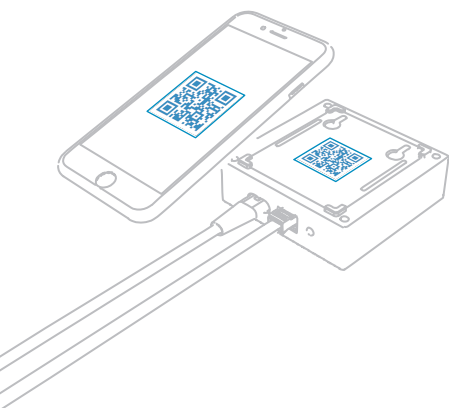
- 2 Connect the cables to Insteon Hub.



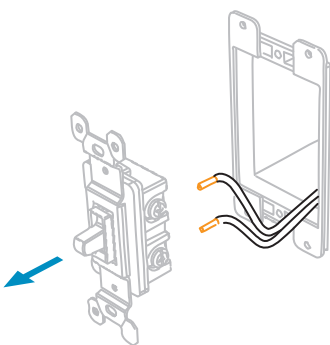
- 3 Download the **Insteon for Hub** app from your device's app store and create a new account.



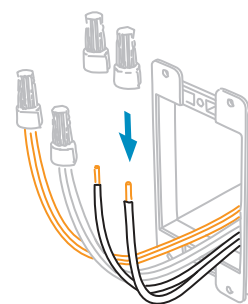
- 4 Follow the on-screen instructions to scan the Setup Code and configure Insteon Hub.



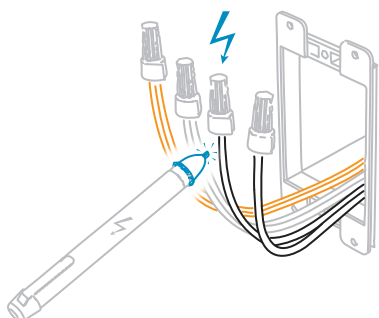
- 5 **Turn off power** at the service panel and remove the existing wall switch.



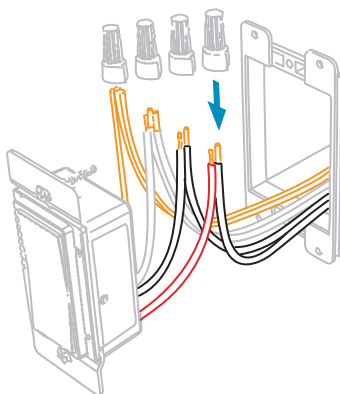
- 6 Unfold all of the wires from within the junction box. Separate the black wires and cap them with wire nuts.



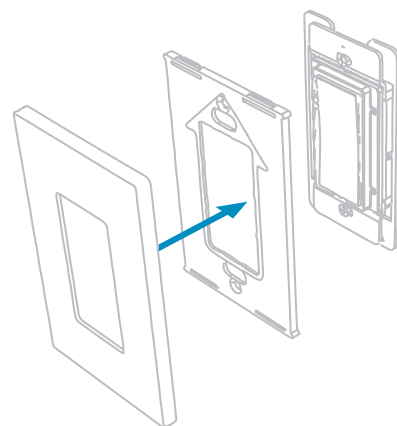
- 7 **Turn on power** and use a voltage detector to identify the live wire; this is your line wire.



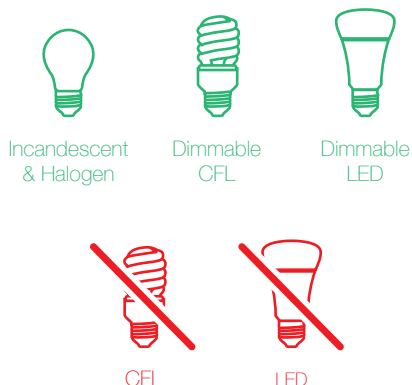
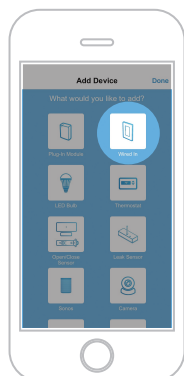
- 8 **Turn off power** and connect the corresponding wires from the junction box with the Insteon Wall Switch and cap them with wire nuts.



- 9 Install the Insteon Wall Switch, attach the wall plate and **turn on power**.



- 10 Return to the Insteon app, tap Wire-In device and follow the on-screen instructions. Repeat for the second Dimmer Switch.



Only connect dimmable bulbs to Dimmer Switch.



866-243-8022

Have questions? We have answers.

insteon.com/support

For more documentation, visit:
insteon.com/get-started-2244-273