

Quick Start Guide

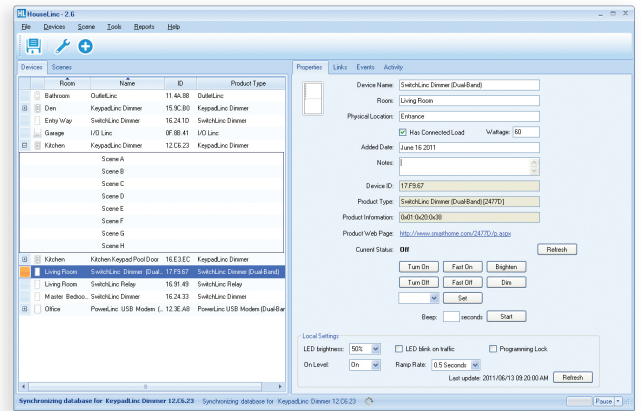
HouseLinc™

Introduction

HouseLinc is the ultimate INSTEON management software. From simple setup through complex scene creation and advanced automation, HouseLinc has you—and your entire home—covered.


Requirements

- One of the following INSTEON computer interfaces: 2413U, 2413S, 2242-222, 2412N, 2412U, or 2412S
- Windows 2000/XP/Vista/7
- 15 MB of disc space and 128 MB of RAM
- Computer needs to remain on to run timers and events



Installation

Note: to help reduce degradation of INSTEON signaling caused by computer-related powerline noise, we recommend the installation of a noise filter (FilterLinc #1626-10) between the computer and power.

- 1) Open browser and go to www.insteon.com/houselinc.html
- 2) Click DOWNLOAD button and follow onscreen instructions. (**Note:** do not launch HouseLinc yet.)
- 3) Connect cable to INSTEON computer interface and to PC
- 4) Launch HouseLinc
- 5) HouseLinc will automatically start looking for the computer interface
- 6) Click on your PLM and click the Activate button
- 7) Select the Devices tab, click on the Add New Device Icon: 
- 8) Press and hold Set buttons on your INSTEON devices
- 9) Create Scenes
- 10) Create Events
- 11) Have fun!

For details on how to configure your devices, links, and scenes please refer to the manual:

www.insteon.com/pdf/houselinc.pdf

Owner's Manual and Tech Support

Owner's Manual and current Quick Start Guide: <http://www.insteon.com/support>

Call: INSTEON Support Line at 866-242-8022

This device complies with FCC Rules and Industry Canada license-exempt RSS standard(s). Operation is subject to the following two conditions: (1) this device may not cause harmful interference, and (2) this device must accept any interference, including interference that may cause undesired operation of the device.

Le présent appareil est conforme aux CNR d'Industrie Canada applicables aux appareils radio exempts de licence. L'exploitation est autorisée aux deux conditions suivantes: (1) l'appareil ne doit pas produire de brouillage, et (2) l'utilisateur de l'appareil doit accepter tout brouillage radioélectrique subi, même si le brouillage est susceptible d'en compromettre le fonctionnement.