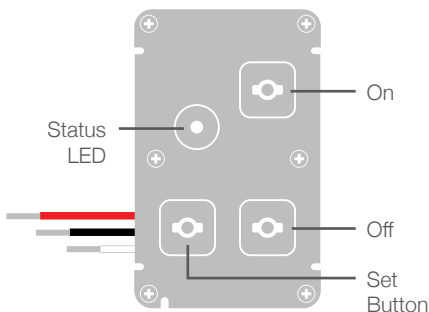


I N S T E  N[®]



Insteon On/Off In-Line Module
Quick Start Guide

Insteon On/Off In-Line Module



For the complete Owner's Manual and more, visit: **insteon.com/support**

Tools Needed for Installation



Phillips Screwdriver



Flathead Screwdriver



Voltage Detector



Wire Cutter / Stripper



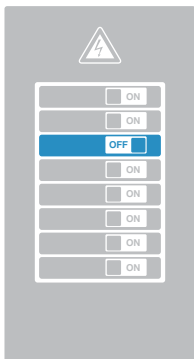
Disconnect Power

Always disconnect power before installation. Contact Insteon Support when uncertain about installation.

1-866-243-8022

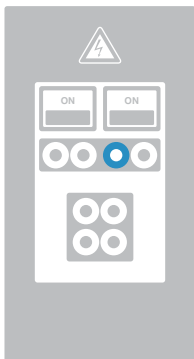
Basic Installation

- 1 Turn off power to your fixture at the electrical service panel.



Circuit Breakers

or



Fuse Panel



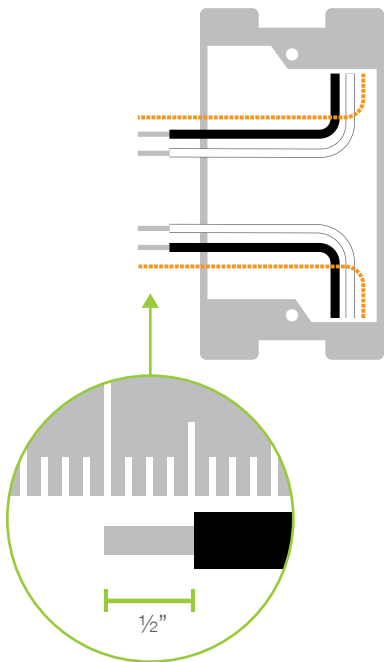
Power is ON



Power is OFF

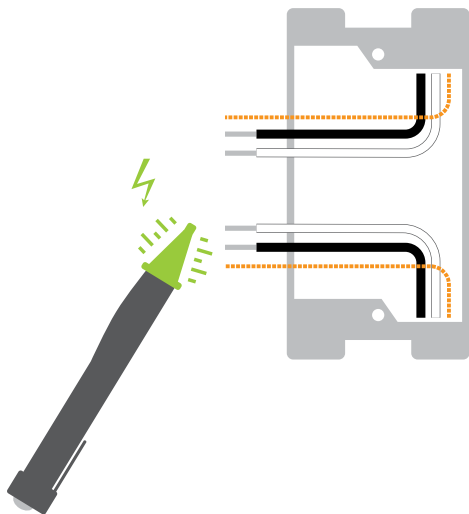
2

Remove the fixture and disconnect the wires. Be sure there is about $\frac{1}{2}$ inch of bare wire showing.



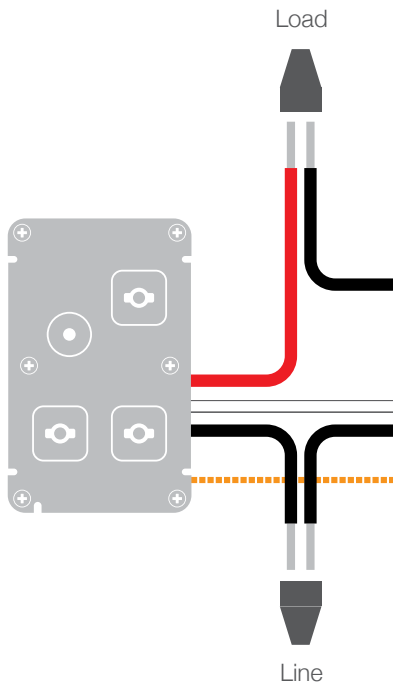
3

Turn on power at the circuit breaker and use a voltage detector to carefully identify **line** and **neutral**. **Line** will be energized.

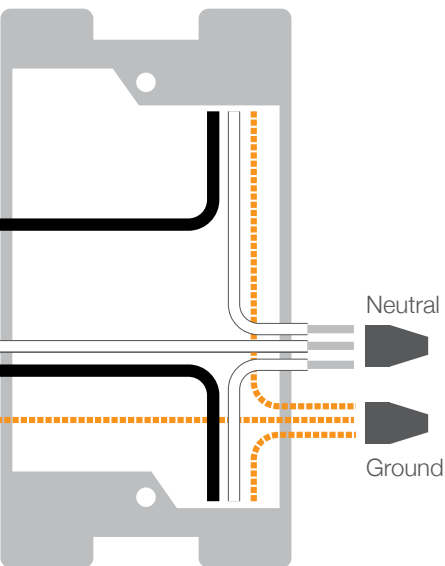


4

Turn off power at the circuit breaker. Connect the junction box. Verify that the wire nuts are secure except for the bare ground wire.

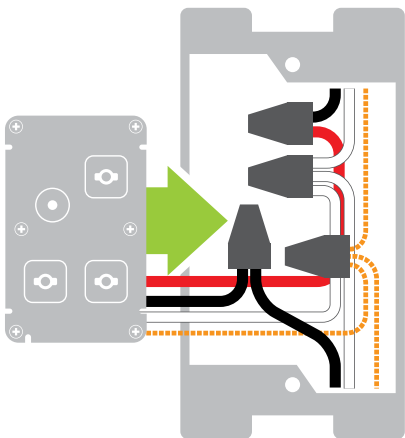


the In-Line Module wires to the identified wires in
secure and that no exposed copper wire is visible

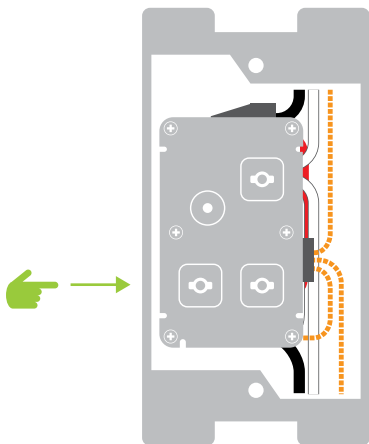


5

Mount the In-Line Module into the junction box and turn power on to the outlet at the circuit breaker panel.



- 6 Test your On/Off In-Line Module by tapping the On and Off buttons. Your fixture will turn on and off.



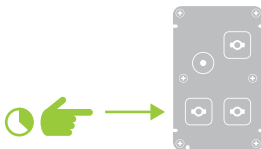
Installation complete. You can now add your On/Off In-Line Module to the Hub.

Linking to the Hub

Follow the on-screen instructions to add your In-Line Module to the Insteon Hub.



When prompted, press and hold the set button on the In-Line Module.



If not using the Hub, refer to the instructions that came with your product.

Device Control

Turn on, turn off, set schedules and create scenes for your On/Off In-Line Module using the Insteon Hub and App.

